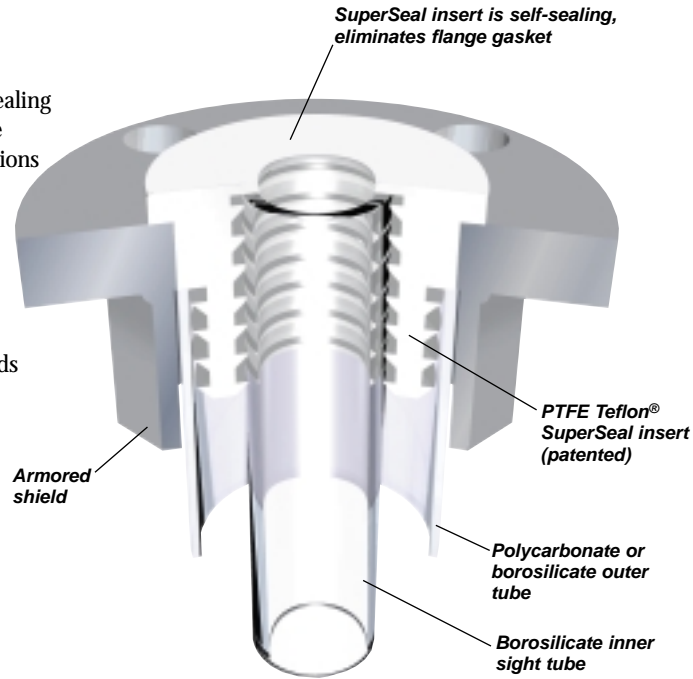


## Model LT Tube-N-Tube™ Level Gages (patented)

- Approved by the Factory Mutual System
- Available in any length up to 20 feet
- Unobstructed visibility
- Maintenance free
- Patented one-piece SuperSeal inserts are self-sealing
- Wetted parts are PTFE Teflon® and borosilicate
- Designed for cryogenic or hot process applications
- Transparent insulation reduces heat loss, eliminates many heat-tracing requirements
- Inner sight tube is protected and isolated
- Rated up to 285 psig (ANSI 150)
- Recommended for full-vacuum applications
- Internal heat tracing available; consult factory
- Optional 304/316 SS, CPVC, or fiberglass shields
- ANSI Class 300 lb flanges are available
- Custom designs available; consult factory

### Standard Construction

- Borosilicate inner sight tube
- Polycarbonate or borosilicate outer sight tube
- PTFE Teflon® SuperSeal inserts
- Carbon steel shield and flanges, epoxy coated
- ANSI Class 150 lb flanges



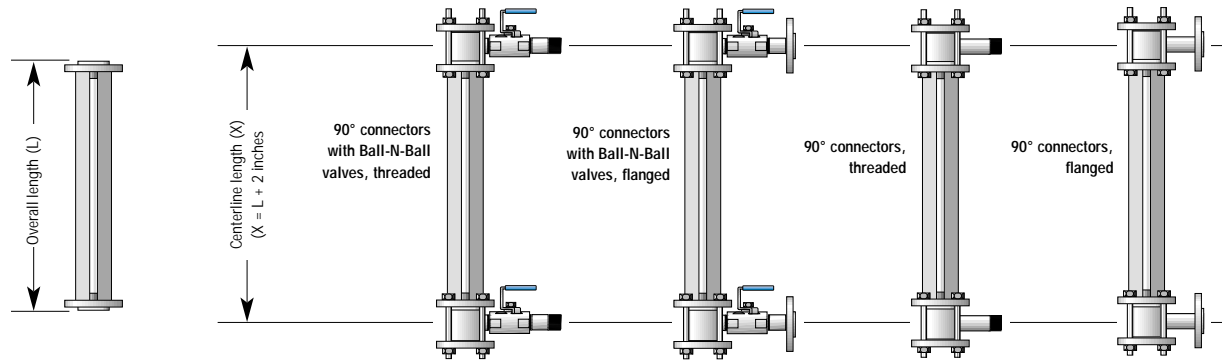
### Model LT Specifications

Sight tube material	Sight tube size, in.	Outer tube material	Outer tube size, in.	Gage rating, psig	Flange size, in. ANSI 150
HP	0.62	LX	1.50	150	1.00
HP	0.62	OG	1.50	150	1.00
HW	0.62	LX	1.50	285	1.00
HW	0.62	PI	1.50	285	1.00
HP	1.00	LX	2.25	150	1.50
HP	1.00	OG	1.50	150	1.50
HW	1.00	LX	2.25	285	1.50
HW	1.00	OG	1.50	285	1.50
PI	1.00	LX	2.25	150	1.50
PI	1.00	LX	2.75	150	2.00
PI	1.00	OG	2.50	150	2.00
HP	1.00	LX	2.75	150	2.00
HP	1.00	OG	2.50	150	2.00
HW	1.00	LX	2.75	285	2.00
HW	1.00	OG	2.50	285	2.00
PI	1.50	LX	2.75	135	2.00
PI	1.50	OG	2.50	135	2.00
HW	1.50	LX	2.75	285	2.00
HW	1.50	OG	2.50	285	2.00
PI	2.00	LX	4.00	115	3.00
PI	2.00	OG	3.00	115	3.00
HW	2.00	LX	4.00	285	3.00
HW	2.00	OG	3.00	285	3.00

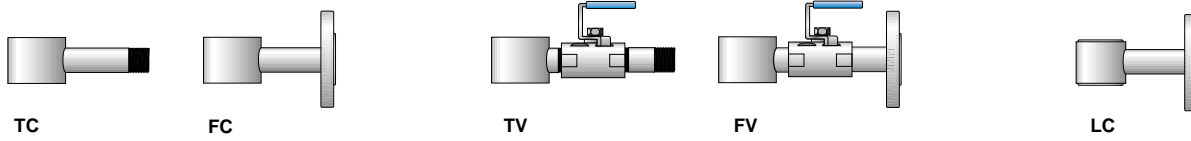
PI = Standard Borosilicate    HP = High-Pressure Borosilicate    HW = Heavywall Borosilicate    OG = Outer Borosilicate  
 LX = Outer Polycarbonate



## Gage-to-Vessel Connections



Visual Length = Overall length - 4 inches



### Gage Connectors

- Threaded 1/2 to 1 in. NPT (TC)
- Flanged 1/2 to 2 in. (FC)
- Carbon steel, 316 SS or CPVC
- Socket weld or weld neck flanges are available

### Gage Connector with Ball-N-Ball valves

- Threaded 1/2 to 1 in. NPT (TV)
- Flanged 3/4 to 2 in. (FV)
- Carbon steel, 316 SS or CPVC
- Socket weld or weld neck flanges are available

### PTFE Teflon®-Lined Gage Connector

- Flanged 3/4, 1, 1 1/2, or 2 in.
- 150 or 300 lb ANSI
- Carbon steel or 316 SS

## Gage Accessories

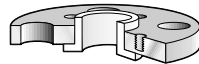
### Blind Flanges

- Same size as gage flange
- Captures connector with gasket and hardware
- Vent and drain sizes: 1/4 to 1 inch FNPT
- Carbon steel, 316 SS, CPVC, or fiberglass



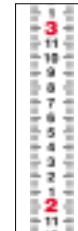
### Lined Reducing Flanges

- PTFE Teflon®-lined
- Sizes up to 10 in. x 8 in.
- Used in place of gage connectors for nonstandard installations



### Calibration Scales

- Polycarbonate or 316 SS
- Inches/feet, total inches, or metric
- Custom-calibrated sight tubing available, consult factory



### Explosion-Proof Illuminators

- 120-VAC, 56-watt, 3000-hour
- Class 1, Division 1, B, C, D, E
- Requires one lamp per 6 ft of visual length

## Gage and Connector Part Numbers

Use the spaces below to generate the model number for your gages. Codes for materials and diameters are from the chart at right.

Overall length (L), inches	Gage model	Sight tube material	Sight tube size	Flange/shield material	Gage flange size	Outer sight tube material	Outer sight tube size	Connector type	Connector material	Gage flange size	Connection size
	LT										

### Options

- Calibrated scale: Polycarbonate \_\_\_ 316 SS \_\_\_ Sight tube \_\_\_ Feet/inches \_\_\_ Total inches \_\_\_ Metric \_\_\_ Other \_\_\_
- Level floats: Orange PP \_\_\_ Red Teflon® \_\_\_
- Explosion-proof illuminator
- Sight tube redlining
- Vent and drain valves: Carbon Steel \_\_\_ 316 SS \_\_\_ CPVC \_\_\_
- PTFE-lined reducing flanges: size \_\_\_\_\_ X \_\_\_\_\_
- Internal heat tracing

### Codes for Part Numbers

Sight Tube Material	Code	Outer Tube Material	Code
Standard Borosilicate	PI	Acrylic	AC
High-Pressure Borosilicate	HP	Borosilicate	OG
Heavywall Borosilicate	HW	Polycarbonate	LX
Shield/Flange Material	Code	Size, inches	
Carbon Steel	CS	0.62	6
316 SS	S6	1.00	10
304 SS	S4	1.50	15
CPVC	CP	2.00	20
Fiberglass	FG	2.25	22
		2.50	25
		2.75	27
		3.00	30
		4.00	40



Teflon is a registered trademark of E. I. DuPont